

RevNo	Revision note	Date	Signature	Checked
6				

Drawing Notes:

- 1) VERTICAL CAPACITY = 100,000 LBS
- 2) RADIAL CAPACITY = 65,000 LBS
- 3) BOLTING SPECIFICATION:
2" DIA. SOCKET HEAD CAP SCREWS
FL = 170,000 PSI
MIN. THREAD ENGAGEMENT = 2.0"
BOLT PRELOAD = 2900 LB-FT
- 4) INSTALLATION INSTRUCTIONS:
HINGE PIN CENTERLINES SHALL BE INSTALLED CO-LINEAR IN 2 VERTICAL PLANES WITH NO MISALIGNMENT.
MINIMUM OF 2 HINGES (1 PAIR) PER DOOR. DOOR WEIGHT SHALL NOT EXCEED VERTICAL CAPACITY OF ONE HINGE.
ANY LATERAL CLEARANCES OR SIDE PLAY THAT MAY DEVELOP FROM TOLERANCE STACK-UP CAN BE REMOVED BY LATERAL PRELOADING THE HINGE BEFORE THE BOLTS ARE TIGHTENED.
FOR HIGH FREQ. APPLICATIONS, ADEQUATE LOAD DISTRIBUTION BETWEEN HINGES IS REQUIRED TO OBTAIN THE HIGHEST MARGINS OF SAFETY ON ROLLER BEARINGS. USE A TORQUE WRENCH TO EQUALIZE THE VERTICAL LOAD.
- 5) HINGE WT = 1395 LBS (APPROX)

Tolerances	
Decimal	+ / - 0.005 UNLESS
Fractional	+ / - .xxx
Angular	+ / - xxx

K-5000 CUSTOMER DRAWING

RH SHOWN LH OPPOSITE

Approved by - date

Filename

Date 8/15/19

Scale 1:1

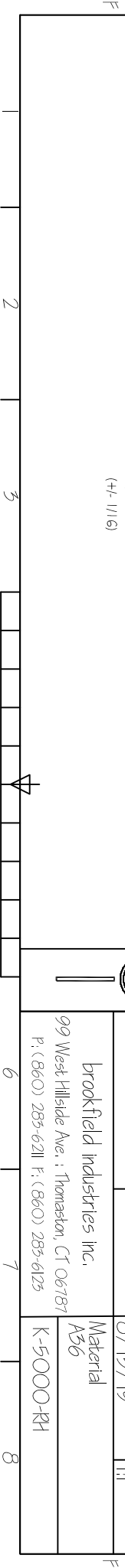
Drawn by KPK

Checked by

Edition 0

brookfield industries inc.
99 West Hillside Ave.; Thomaston, CT 06787
P: (860) 283-6211 F: (860) 283-6125

K-5000-RH



F
E
D
C
B
A

2
3
4
5
6
7
8