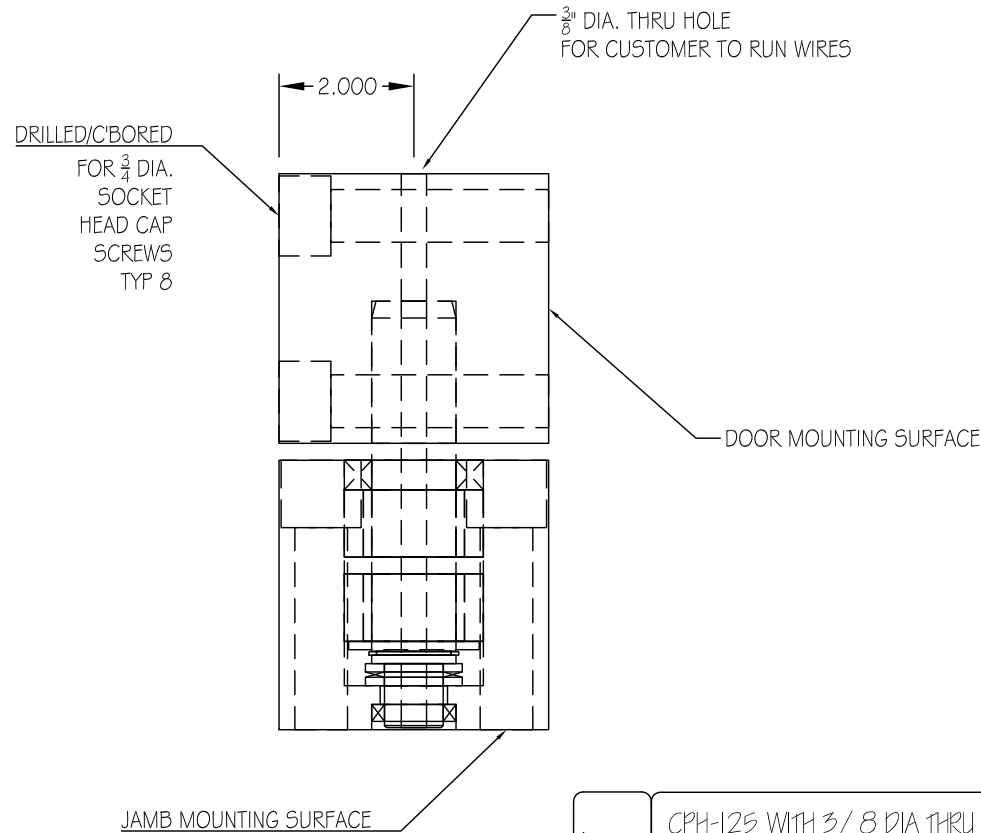
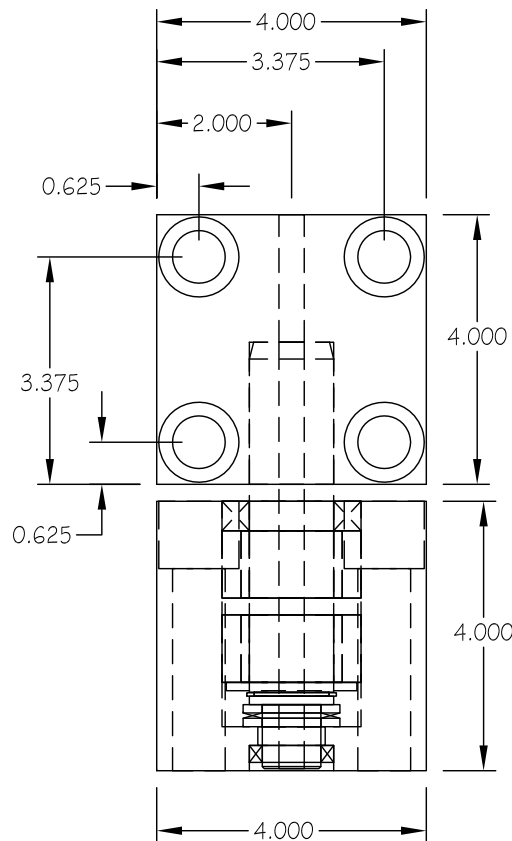


RevNo	Revision note	Date	Signature	Checked



Drawing Notes:

SPECIFICATIONS
 CAPACITIES: EVALUATED FOR EACH APPLICATION.
 BOLTING: $\frac{3}{8}$ " DIA SOCKET HEAD CAP SCREWS, $F_u = 170,000$ PSI
 PRELOAD = 2600 LB-IN
 THREAD ENGAGEMENT: $\frac{3}{4}$ " MIN.
 MATERIAL: 1018 CRS
 FINISH:
 BASE METAL; PRIMED, ZINC CLEAR (OPTIONAL)
 HINGE PIN: ARMOLOY COATED(TDC) FOR CORROSION PROTECTION
 INSTALLATION: HINGE PIN CENTERLINES SHALL BE PLUM AND ALIGNED WITH THE VERTICAL AXIS TO THE EXTENT THAT THE DOOR DOES NOT FLOAT OR BIND IN ANY POSITION THROUGHOUT THE CYCLE.

Tolerances	
Decimal	+ / - 0.005 UNL
Fractional	+ / - .xxx
Angular	+ / - .xxx

	CPH-125 WITH 3/8 DIA THRU HOLE		Drawn by XXX	
	INSTALLATION DRAWING		Checked by XXX	
	Approved by - date		Edition 0	
	Material SEE BOM	Date 03/26/18	Scale	
brookfield industries inc. 99 West Hillside Ave. : Thomaston, CT 06787 P: (860) 283-6211 F: (860) 283-6123 info1@brookfieldindustries.com			www.brookfieldindustries.com	
			Drawing Number/File Name CPH-125-WirePassThru	