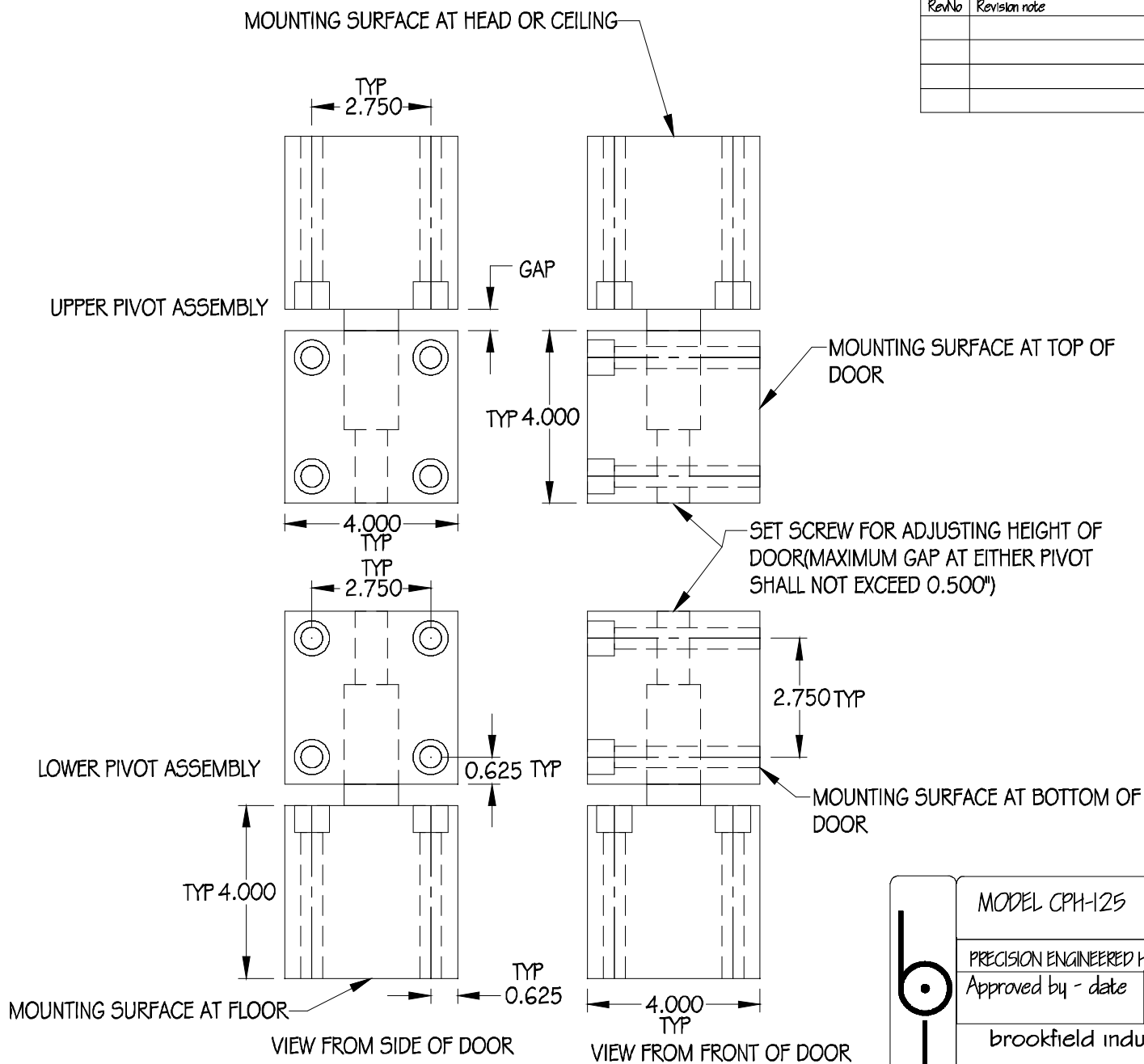


RevNo	Revision note	Date	Signature	Checked



Drawing Notes:

CAPACITIES:
 VERTICAL = 8000 LBS
 HORIZONTAL = 3300 LBS

BOLTING:
 3/4 X 10 SOCKET HEAD
 CAP SCREWS
 MIN. TENSILE= 170,000 PSI
 PRELOAD: 2600 LB-IN

Tolerances	
Decimal	+ / - 0.005
Fractional	+ / - .xxx
Angular	+ / - .xxx

	MODEL CPH-125		Drawn by XXX	
	PRECISION ENGINEERED HIGH CAPACITY PIVOTS		Checked by XXX	
	Approved by - date	Material 1018 CRS	Date 06.14.05	Scale 1:1
	brookfield industries inc. 99 West Hillside Ave. : Thomaston, CT 06787 P: (860) 283-6211 F: (860) 283-6123 info1@brookfieldindustries.com		www.brookfieldindustries.com	
		Drawing Number/File Name CPH-125-1		